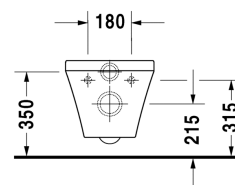
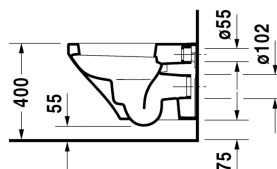
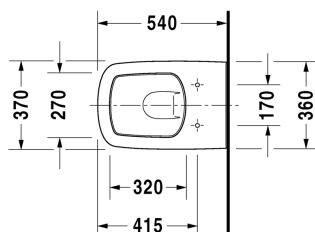


DuraStyle Toilet wall mounted # 255209..00 / 255209..00

| < 370 mm > |



| Toilet wall mounted | Dimension | Weight | Order number |
|--|---------------|-----------------|--------------|
| washdown model, Durafix included, UWL class 1 | | | |
| Colors | | | |
| 00 White Alpin 20 HygieneGlaze (an antibacterial ceramic glaze that provides almost indefinite effectiveness) | | | |
| Variant | | | |
| 4,5 l | 370 x 540 mm | 23.000 kilogram | 255209..00 |
| 4,5 l | 370 x 540 mm | 23.000 kilogram | 255209..00 |
| Infobox | | | |
| Durafix for invisible fixation is included in delivery | | | |
| Sanitary ceramics with the special WonderGliss surface finish will remain clean and attractive-looking for a long time to come. When ordering WonderGliss please add a "1" as eleventh digit to the model number. | | | |
| Accessory | | | |
| Noise reduction gasket for wall mounted toilet | | 0.300 kilogram | 005064 |
| Fixing for wall mounted bidet and wall mounted toilet | Ø 12 x 180 mm | 0.200 kilogram | 006500 |
| Suitable products | | | |
| Toilet seat and cover hinges stainless steel, without soft closure, | | | 006371 |
| Toilet seat and cover hinges stainless steel, removable, with soft closure, | | | 006379 |
| Toilet seat and cover with lateral reinforcement and extended hinge shaft, hinges stainless steel, without soft closure, | | | 002061 |

All drawings contain the necessary measurements which are subject to standard tolerances. They are stated in mm and are non-binding. Exact measurements, in particular for customised installation scenarios, can only be taken from the finished piece.