



Monaco Doc M Pack

Illustrated

S7075 Monaco Doc M pack with closed coupled WC and cistern with spatula lever, handrinse basin with single lever mixer, grab rails, seat no cover

Configuration options

Material

Mixed Material

Weights

S7075 63.48KG

Colours

White (AC)
Blue (LI)

Standards

Vitreous china to BS 3402.

Special Notes

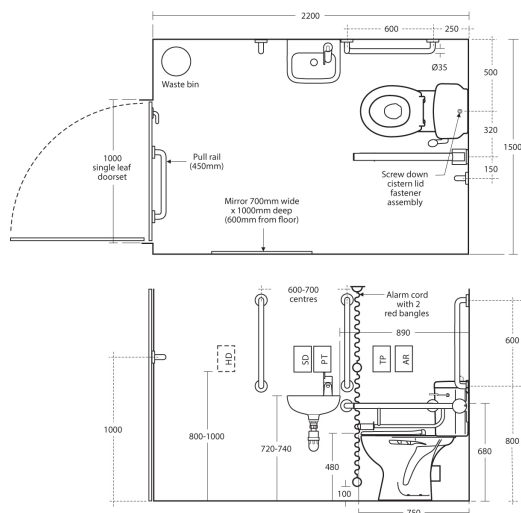
For LRV and RAL numbers see Doc M introduction. For right and left hand corner arrangement. 600mm grab rail S6454 x 4 for room set. 450mm grab rail S6452 is for back of door.

Frequently used applications

Education	Hotels
Office	Public Building
Pubs and Clubs	Residential
Retail	Sports and Leisure

Features

DocM
Special Care
Water Saving



*Armitage
Shanks*

Email: info@idealspec.co.uk
Tel: 0870 122 8822
Fax: 0870 122 8282
Web: www.idealspec.co.uk

Ideal Standard (UK) Ltd. makes every effort to ensure that the information provided on its website is accurate. However, we cannot guarantee this, and accept no liability for any information or advice given via its website.

Powered by
IdealSpec

Date created: 11/06/2015