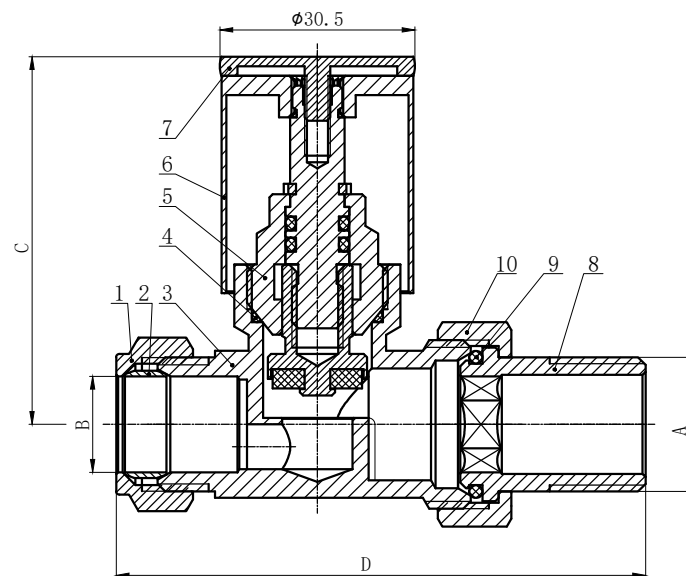


## Radiator Valve



### Specification

Application field : Water

Maximum working pressure: 10 bar;

Operating temperature range: 0 ~ +95 °C; Forged brass body

Compression connections comply with EN1254-2; Taper threads of union tailpiece are to BS21(ISO7);

### Main Size Quantity and Material of Main Parts

NO.	Part Name	Material	Quantity
1	Compression Nut	CW617N	1
2	Olive	T2	1
3	Body	CW617N	1
4	O-ring	EPDM	1
5	Spindle	HPb57-3	1
6	Handle	CW617N	1
7	Handle Cap	CW617N	1
8	Tailpiece	CW617N	1
9	O-ring	EPDM	1
10	Connect Nut	CW617N	1

Specifications	A	B	C	D
1/2	R1/2	15	51.5	81