

GULLY TRAPS



CHPVC
GULLY TRAP IN PVC



CHCR 15 M
GULLY TRAP IN CHROMED
ABS

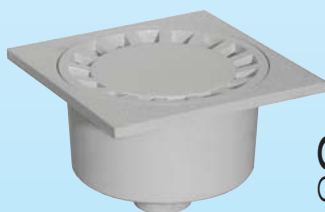
CHABS 15 M
GULLY TRAP IN CHROMED ABS



CHABS 1040
CHABS 1050
GULLY TRAP IN ABS



CHABSV 1040
CHABSV 1050
GULLY TRAP IN ABS



CHPVC 1550
GULLY TRAP IN PVC



CHPP 1550
CHPP 2075
CHPP 2011
GULLY TRAP IN PP

Gully traps represent the ideal drainage for hygienic-sanitary installations (bath, showers) where there is the need for limited depth drainage pipes (terraces) for areas connected to dirty water. Due to its structure it allows a quantity of water to remain so as to prevent the return of bad odors.

The central grill is extractable for easy cleaning.

Inserting a curve in PVC at 87°30' at the exit it is possible to direct the discharge horizontally.

Every dimension of the trap allows the insertion of different Ø according to demands.



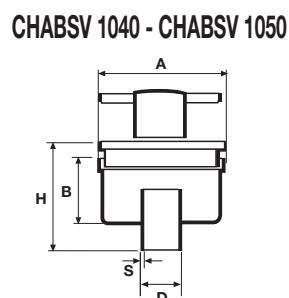
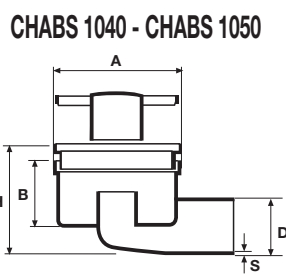
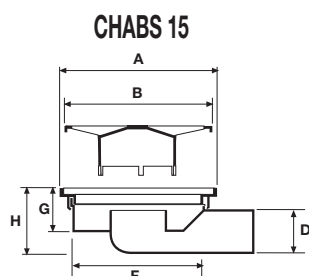
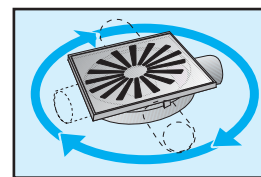
CHARACTERISTICS OF GULLY TRAPS

First Plast offers a wide range of gully traps made of few different materials like **PVC antishock**, **Polipropilene (PP)** or **ABS**. **Antishock PVC gully traps** are available in five different sizes (100-150-200-250-300) with nonslip embossed surface for internal and external applications (garages, etc). **PP gully traps** instead are available in three sizes (100-150-200) and they are recommended for internal installations.

ABS gully traps are available both with 360° horizontal adjustable outlet (CHABS15, CHABS1040, CHABS1050 – as shown as aside) and vertical outlet (CHABSV1040, CHABSV1050).

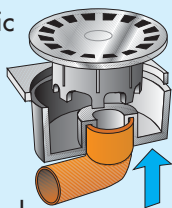
Distinctive characteristic of the above products is their adaptability for installations where floor slap width is reduced (i.e. balconies), as for their tiny size.

Gully traps CHABS are available with tops in two different colours: grey ABS for external applications and chromed ABS for internal purposes, recommendable for toilets and showers.

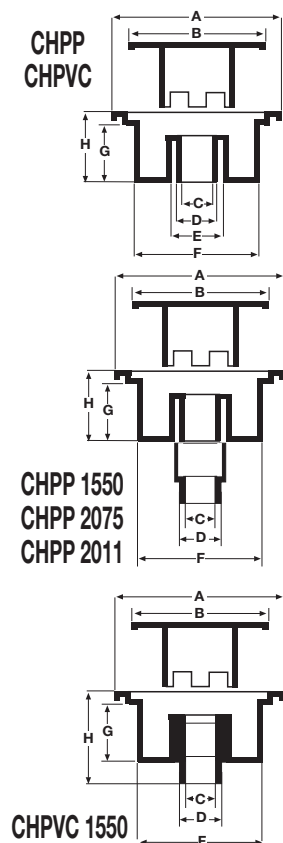


The siphoned traps

The main characteristic is to facilitate the fitting of pipes with a gradient, in comparison with the traditional traps the curve joint is embedded.



MODEL	A	B	D	F	G	H	S	MATERIAL	COLOUR
CHABS 1040	148	143	50	140	45	70	-	ABS	GREY/METALIZED
CHABSV 1040	100	-	40	-	-	82	1,9	ABS	GREY/METALIZED
CHABS 1050	100	-	50	-	-	81	1,7	ABS	GREY/METALIZED
CHABSV 1050	100	40	40	-	-	84	2,01	ABS	GREY/METALIZED
CHABS 15	100	40	50	-	-	88	2,05	ABS	GREY/METALIZED
CHABSV 1540	-	-	-	-	-	-	-	-	GREY/METALIZED
CHABSV 1550	-	-	-	-	-	-	-	-	GREY/METALIZED



MODEL	A	B	C	D	E	F	G	H	MATERIAL	COLOUR
CHPP 10 G	99x99	90	-	40	-	-	43	52	PP	GREY
CHPVC 10	99x99	90	-	32	40	-	43	52	PVC	GREY/ANTHRACITE
CHPP 15 G	149x149	134	-	50	-	125	52	63	PP	GREY
CHPVC 15	149x149	134	40	50	63	125	52	63	PVC	GREY/ANTHRACITE
CHCR 15 M	149x149	134	40	50	63	125	52	63	ABS	METALIZED
CHPP 1550	147x147	132	45	50	-	124	52	63	PP	GREY
CHPVC 1550	150x150	133	45	50	-	124	52	93	PVC	GREY
CHPP 20 G	196x196	179	-	80	90	-	75	85	PP	GREY
CHPVC 20	199x199	179	63	75	90	-	72	87	PVC	GREY/ANTHRACITE
CHPVC 2010	-	-	-	-	-	-	-	-	PVC	GREY/ANTHRACITE
CHPP 2011	196x196	177	105	110	-	168	72	87	PP	GREY
CHPVC 2011	-	-	-	-	-	-	-	-	PVC	GREY/ANTHRACITE
CHPVC 2050	-	-	-	-	-	-	-	-	PVC	GREY/ANTHRACITE
CHPP 2075	196x196	177	70	75	-	168	72	87	PP	GREY
CHPVC 2075	-	-	-	-	-	-	-	-	PVC	GREY/ANTHRACITE
CHPVC 2080	-	-	-	-	-	-	-	-	PVC	GREY/ANTHRACITE
CHPVC 25	249x249	210	-	100	-	200	72	87	PVC	GREY/ANTHRACITE
CHAPVC 25	249x249	210	100	110	133	200	72	87	PVC	GREY/ANTHRACITE
CHPVC 30	299x299	210	-	100	-	200	72	87	PVC	GREY/ANTHRACITE
CHAPVC 30	299x299	210	100	110	133	200	72	87	PVC	GREY/ANTHRACITE