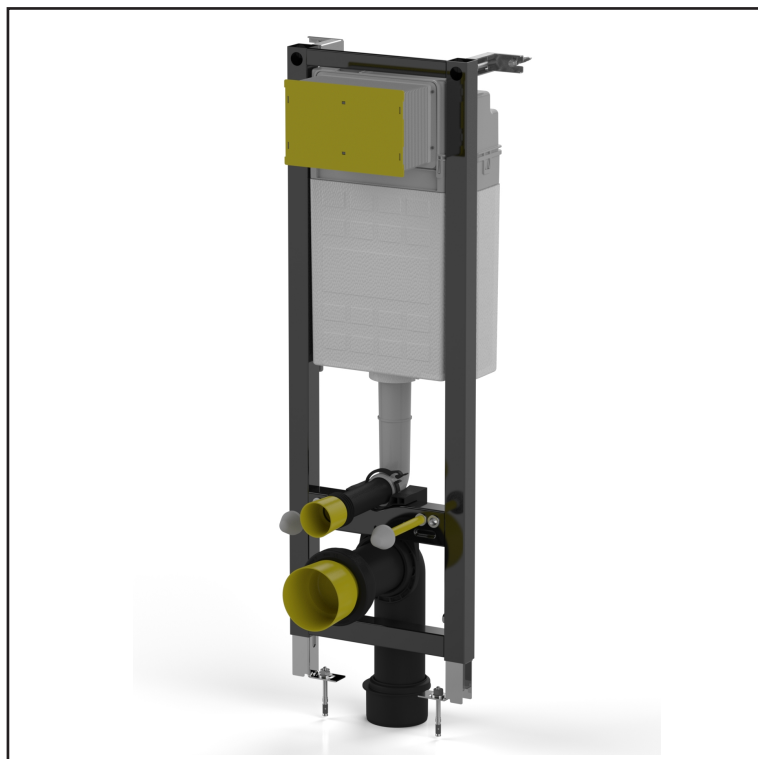


T07-5113-0240



## APPLICATION PURPOSE

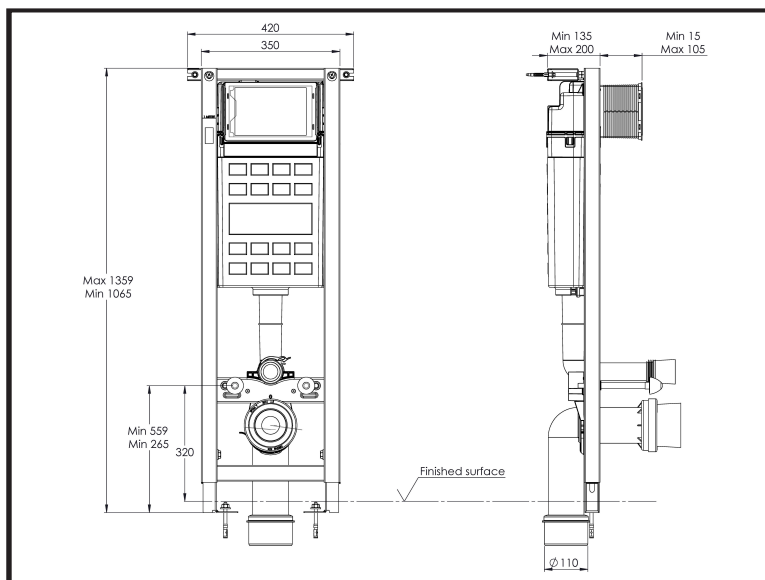
- ☐ Concealed cistern for dry processing
- ☐ For mounting in front of the wall and finishing with plasterboard
- ☐ For mounting behind an existing wall

## CHARACTERISTICS

- ☐ WC cistern with support frame
- ☐ Black powder coated frame
- ☐ Adjustable feet (29.4 cm)
- ☐ Dual flush 3/6 L
- ☐ Insulated against condensation
- ☐ Quiet hydraulic float valve
- ☐ Pre-installed stop valve
- ☐ Water connection 1/2"
- ☐ Wall fixation kit
- ☐ Front control
- ☐ Frame designed to carry max load of 400kg
- ☐ 10 years guarantee
- ☐ 25 years parts availability

## SCOPE OF DELIVERY

- ☐ WC connection kit
- ☐ Fixation materials
- ☐ Masonry aid
- ☐ Discharge elbow 90 mm with reducer to 110 mm
- ☐ Mounting instructions



## TECHNICAL DATA

Colour	black powder coated
Material frame	steel
Material tank	PP
Dimensions	350 x 1120 x 135-200 mm

## ARTICLE

Art. nr.	T07-5113-0240
EAN nr.	8681282618682
Units per box	1
Units per pallet	25