



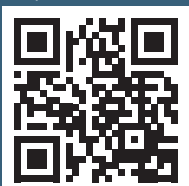
Features:

- Unique Cool Chrome technology ensures the bar valve stays cool to the touch while in use.
- Dual control ? Flow and temperature are controlled separately giving accurate control of both.
- Factory set to a maximum of 38°C to eliminate the ability to select an unsafe temperature, can be adjusted up to a maximum of 46°C.
- Supplied with WMNT10 C fast fit connections.
- Supplied with 1.5m hose, riser rail, hose retainer and single function handset with rub clean nozzles.

Product Certifications:



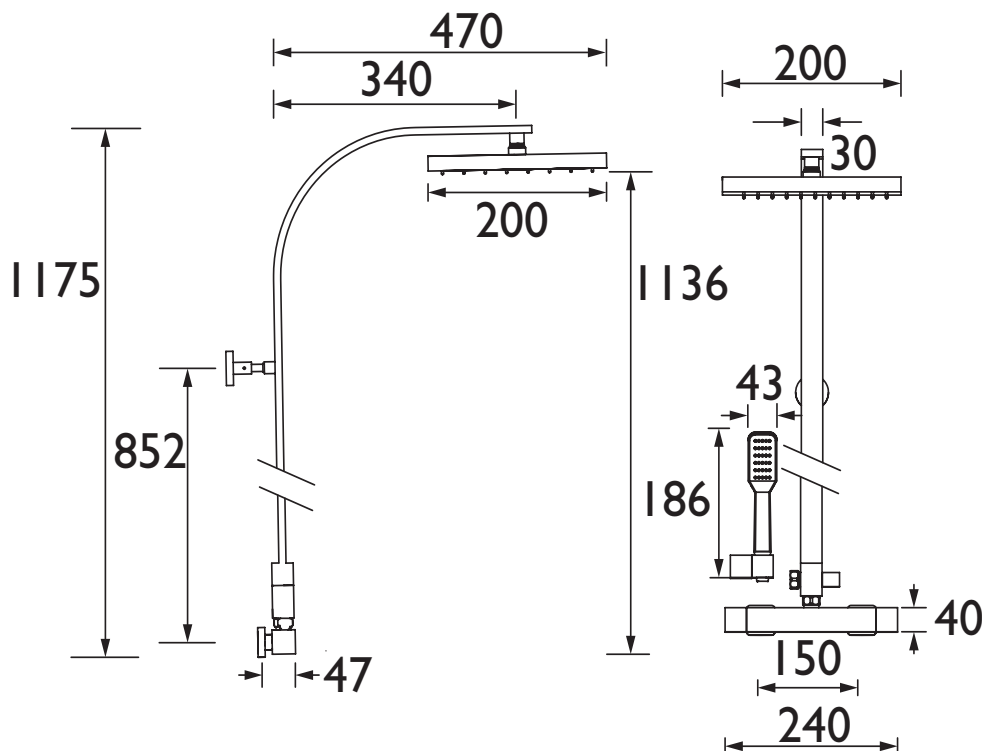
For more products, visit our website:
<http://www.bristan.com>



Specification

Finish/Colour:	Chrome Plated
Main Construction Material:	Brass
No of Controls:	2
Shower Type:	Bar Shower
Shower Head Type:	Fixed Head and Handset
Valve/Cartridge Type:	Thermostatic Cartridge
Maximum Hot Water Supply Temperature °C:	65
Maximum Static Pressure: (bar)	10
Plumbing System Suitability:	Suitable for all plumbing systems
Minimum Dynamic Pressure:	1.0 Bar
Maximum Dynamic Pressure:	5.0 Bar
Connection Inlet:	15mm Compression
Connection Outlet:	G 1/2"
Isolation Valve Included:	No
Check Valve Included:	Yes

Dimensions (measurements in mm)



Flow Rates (l/min)

System Pressure (bar)	1	2	3	5
Through Handset (mixed)	5	7.4	9.2	12.2
Through Shower Rose (Mixed)	5	7.4	9.2	12.2

TECHNICAL
DATA
SHEET



BRISTAN

D3