

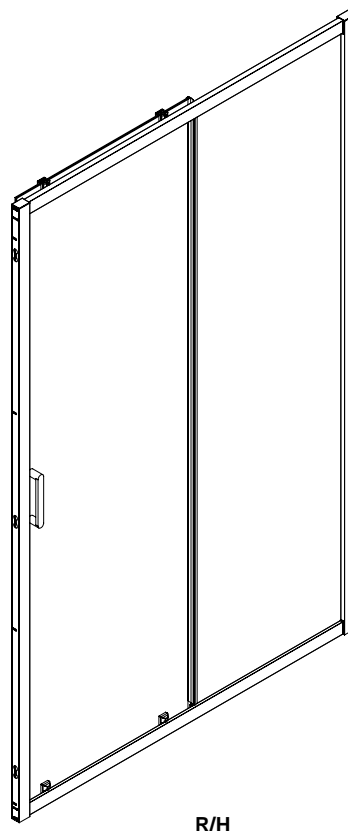
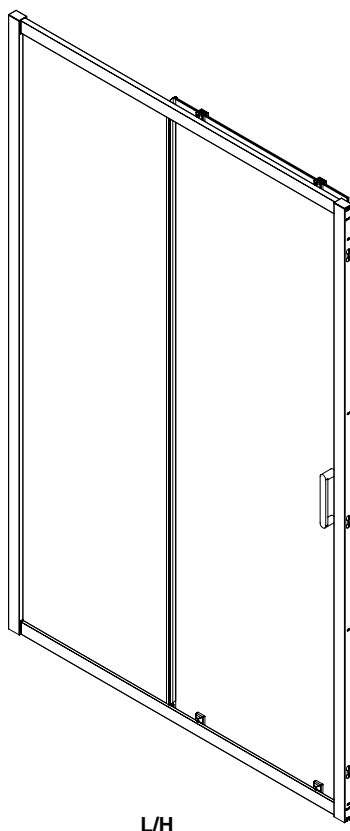
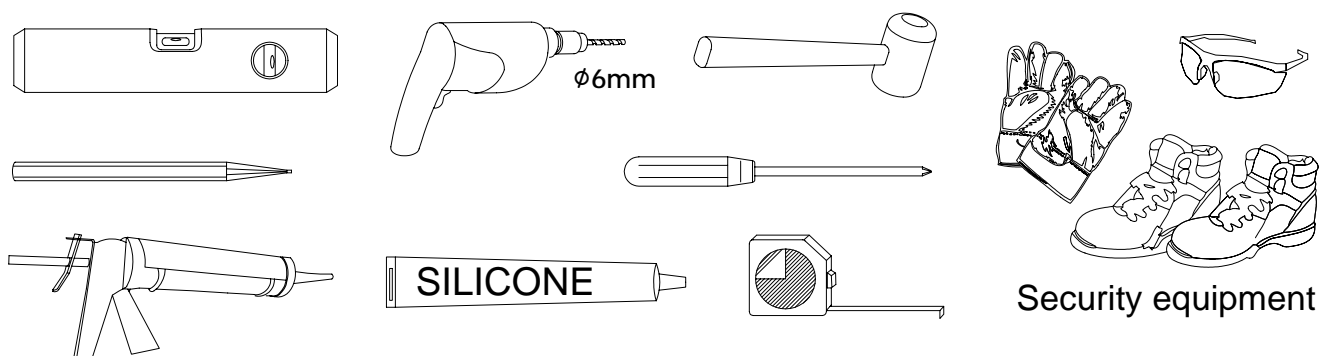
# SLIDING DOOR

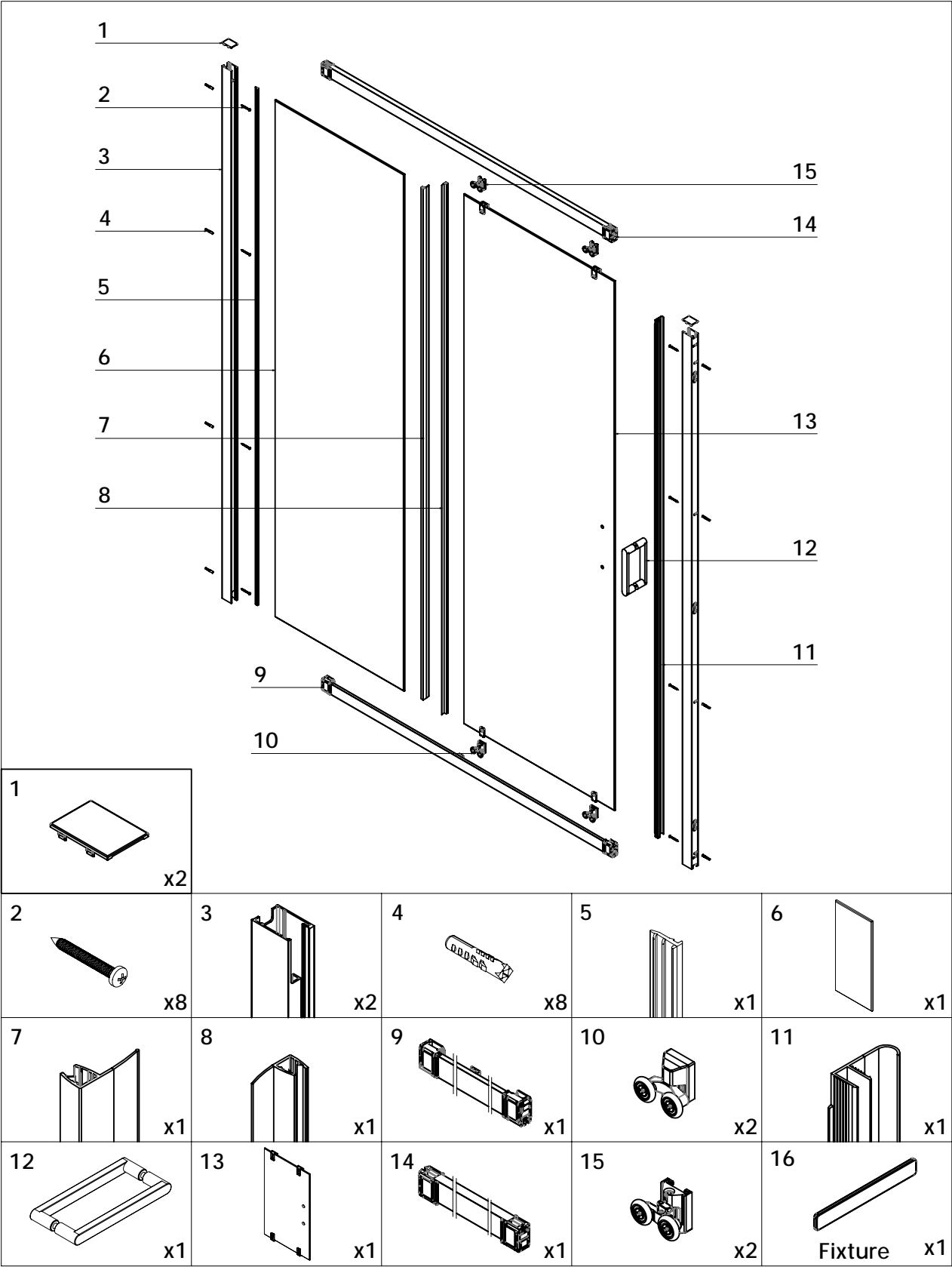
## Installation Instructions

All glasses used in Nova products are automotive grade and toughened safety glass.

- Prior to installation check that all fittings have been supplied.
- The tray should be installed by a suitably qualified person. The tray should be level, the walls should be tiled down to the tray, and the horizontal gap between the tiles and tray must be sealed with silicone sealant to ensure water-tightness.
- Handle glass with care. Impacts can damage both the glass and the frame.
- Please check for any hidden pipes or cables before drilling holes in the wall.
- The success of the installation and operation is, of course, dependant on the squareness, alignment and construction of the walls to which the enclosure is fixed. If the walls are significantly out of true we recommend dry lining the walls to ensure they are both vertical and horizontal aligned.

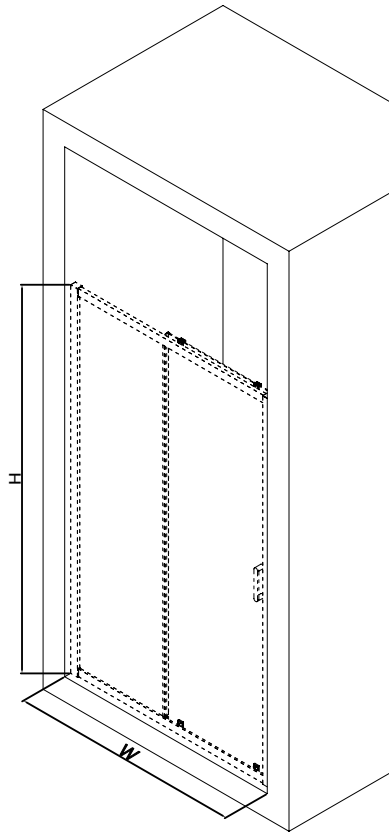
### Tools Required:



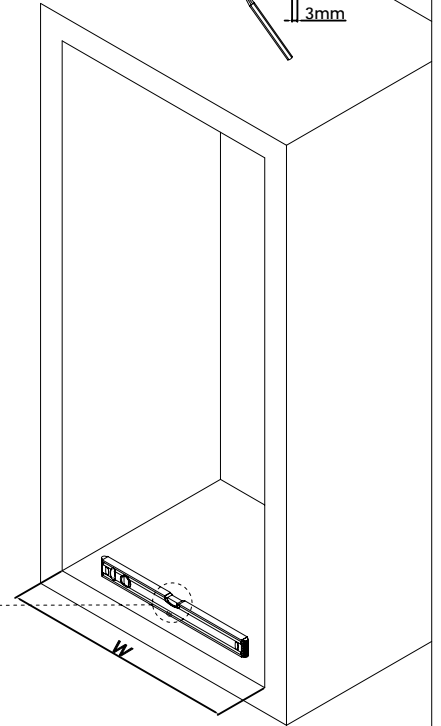
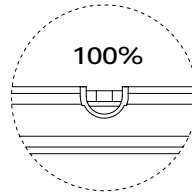
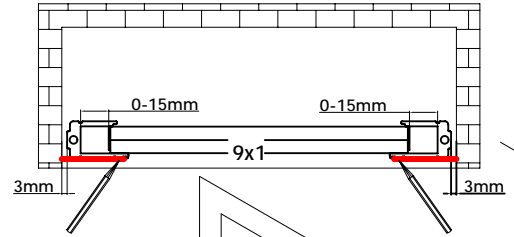


1

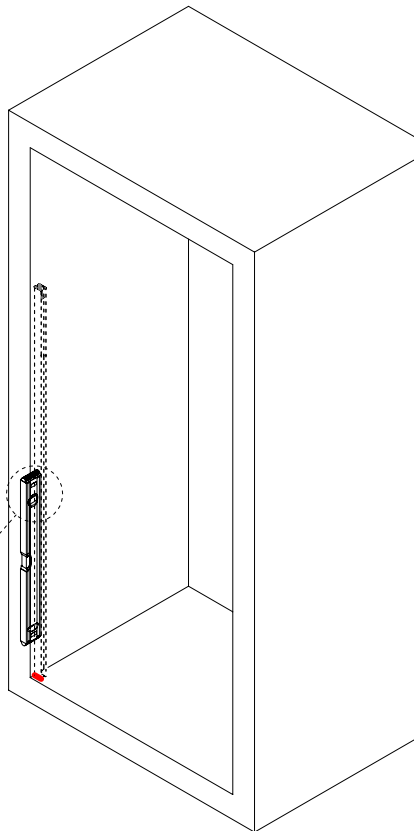
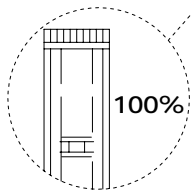
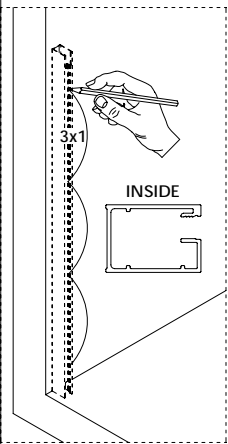
Code	W*H
U49200	(949-985)x1900
U49201	(1049-1085)x1900
U49202	(1149-1185)x1900
U49203	(1349-1385)x1900
U49204	(1649-1685)x1900



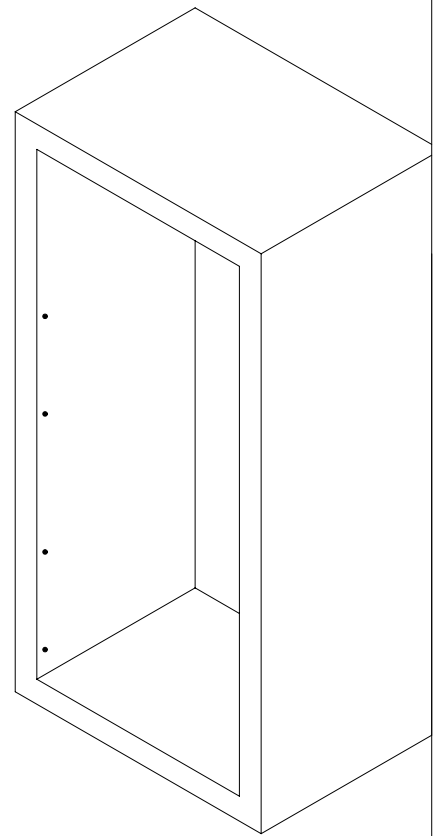
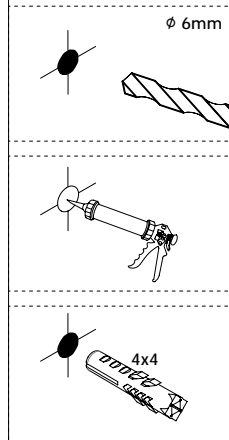
2

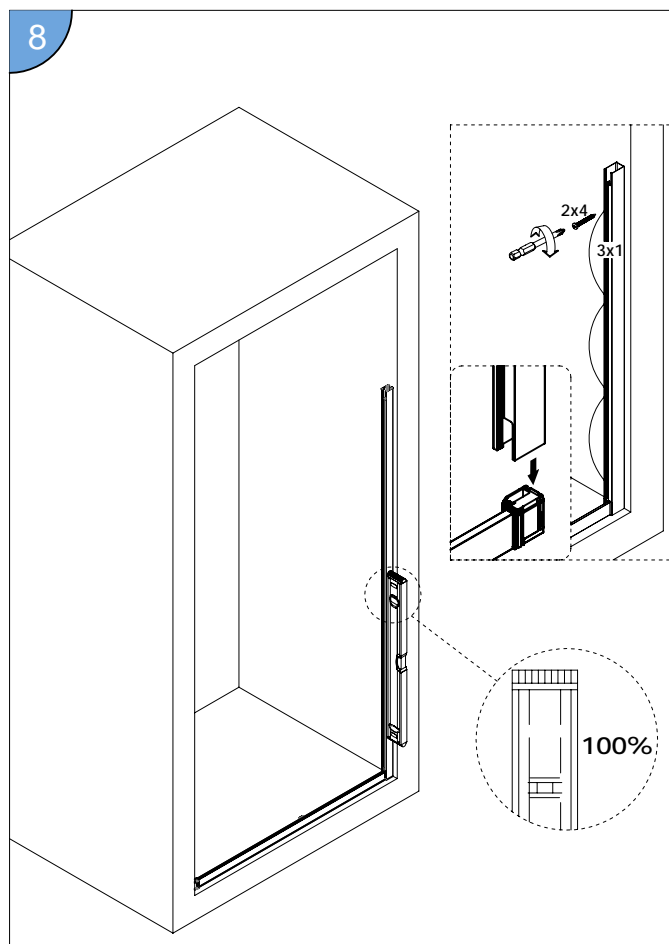
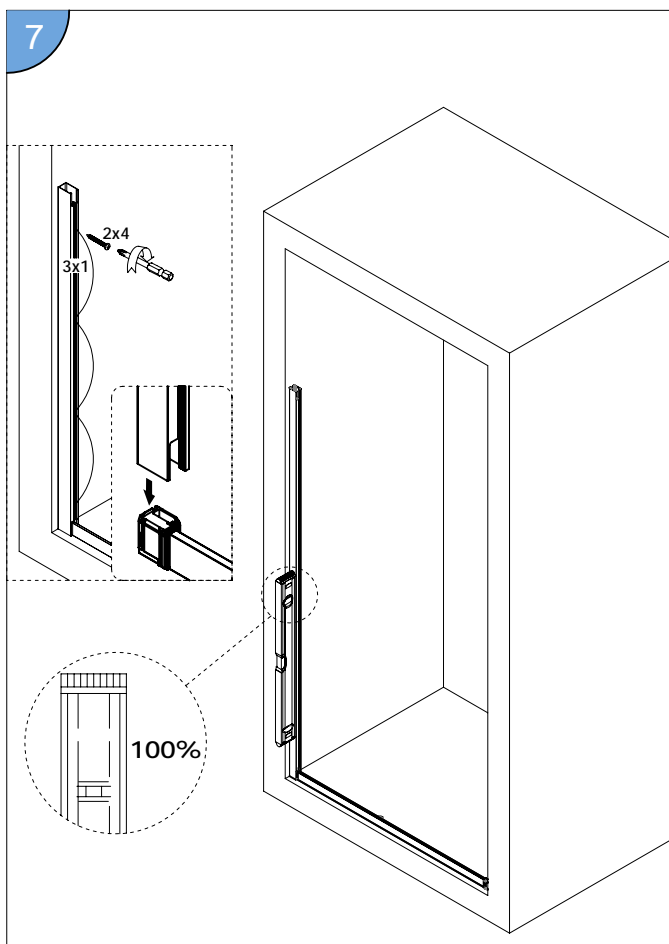
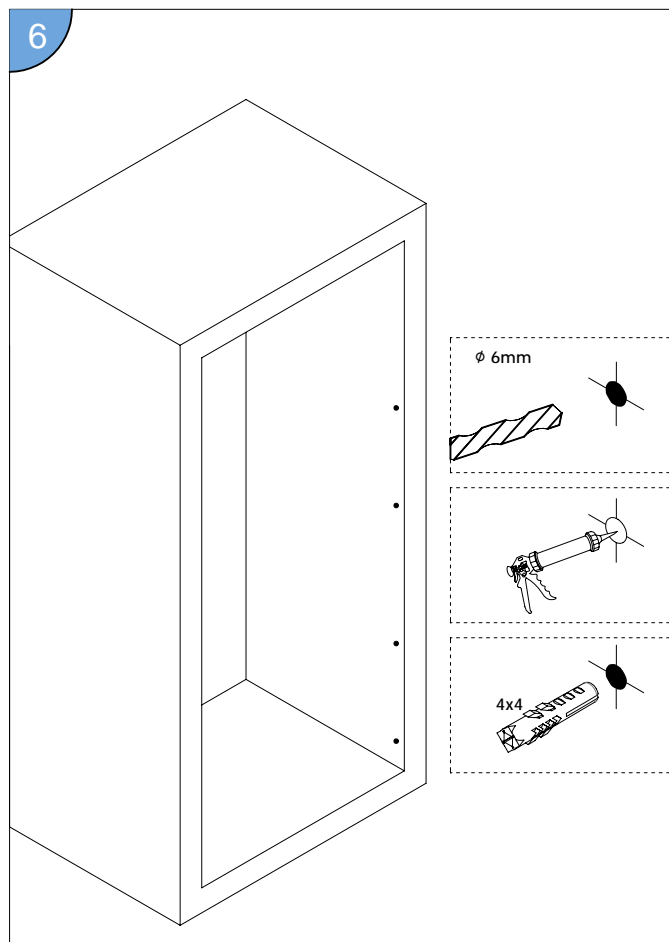
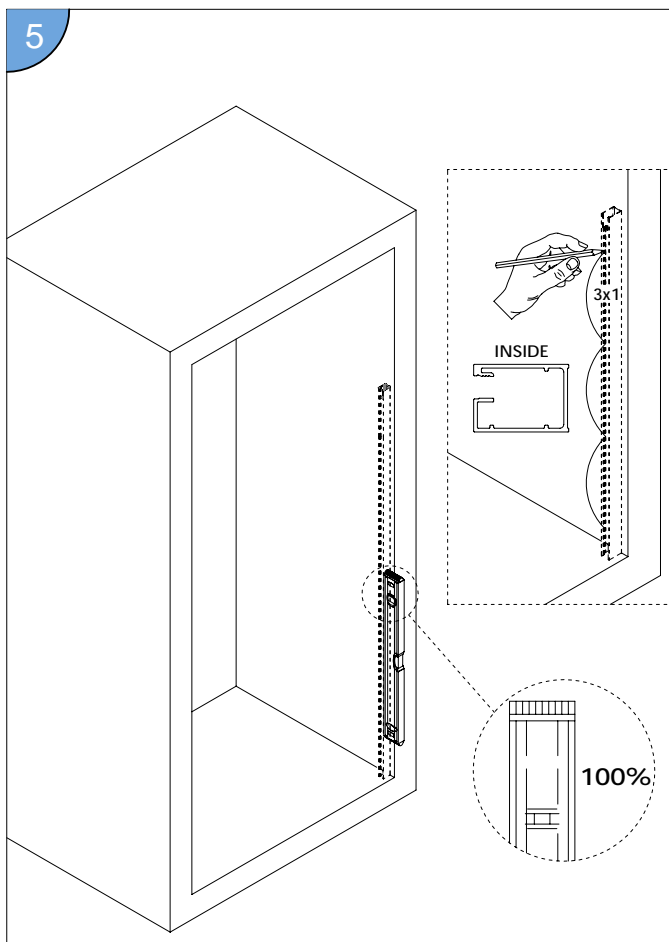


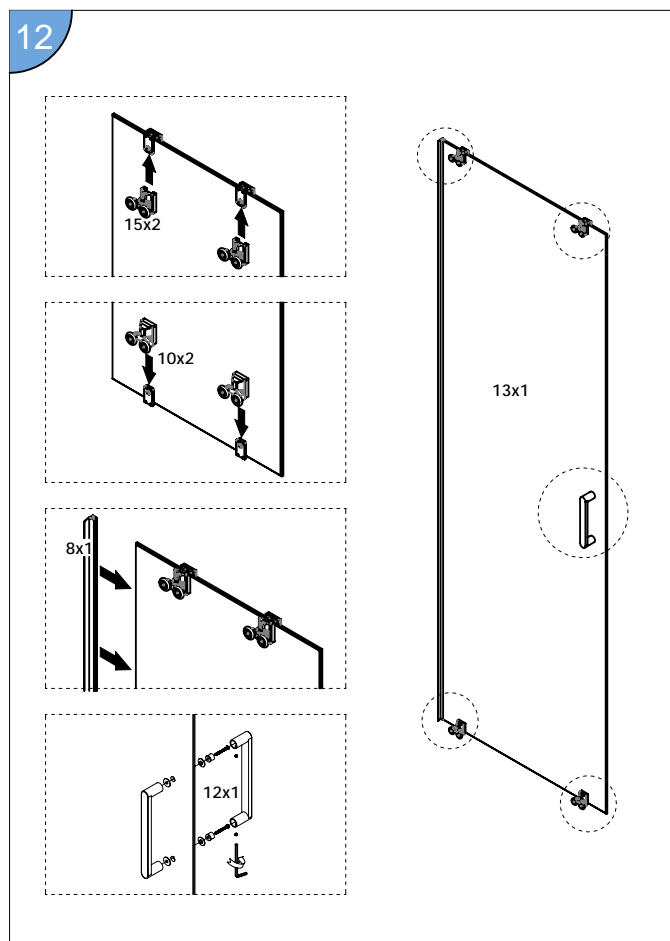
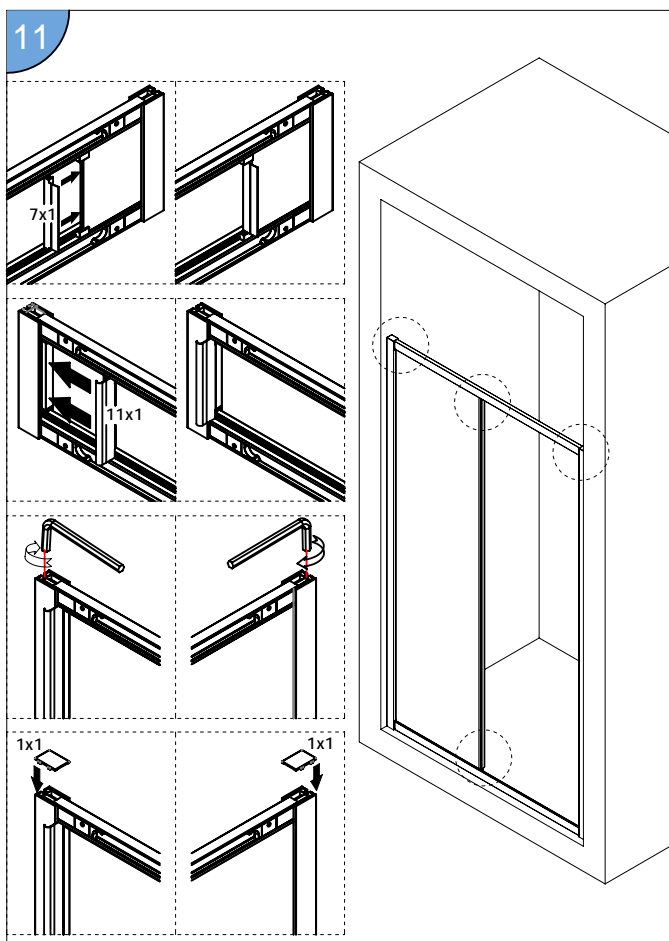
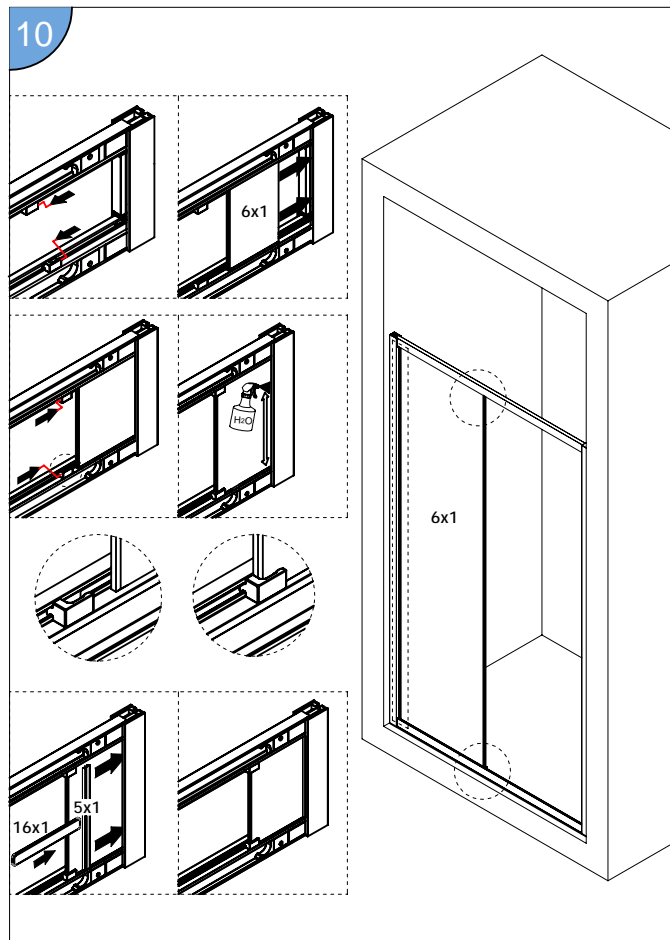
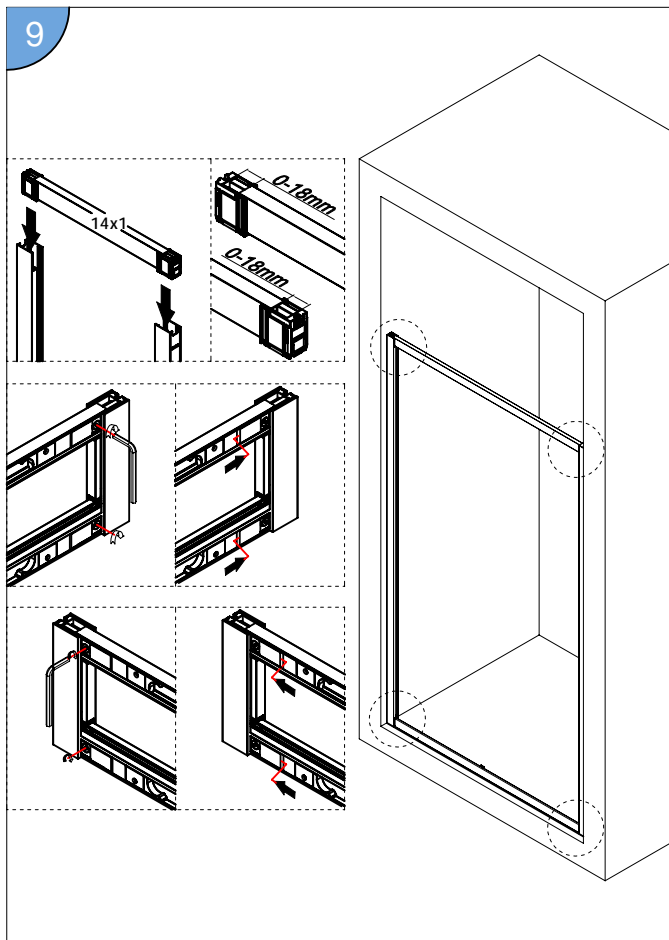
3



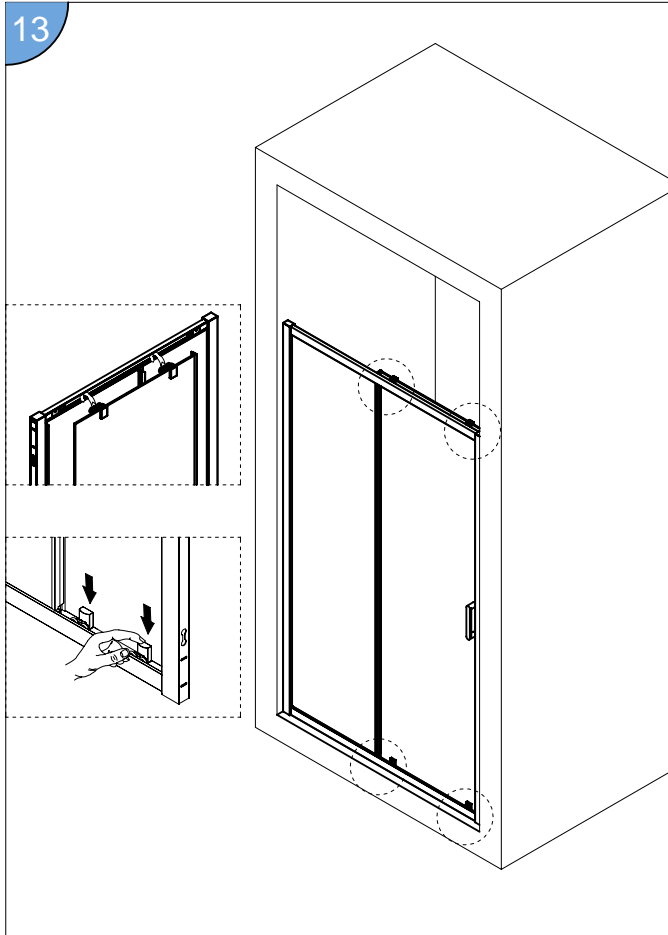
4



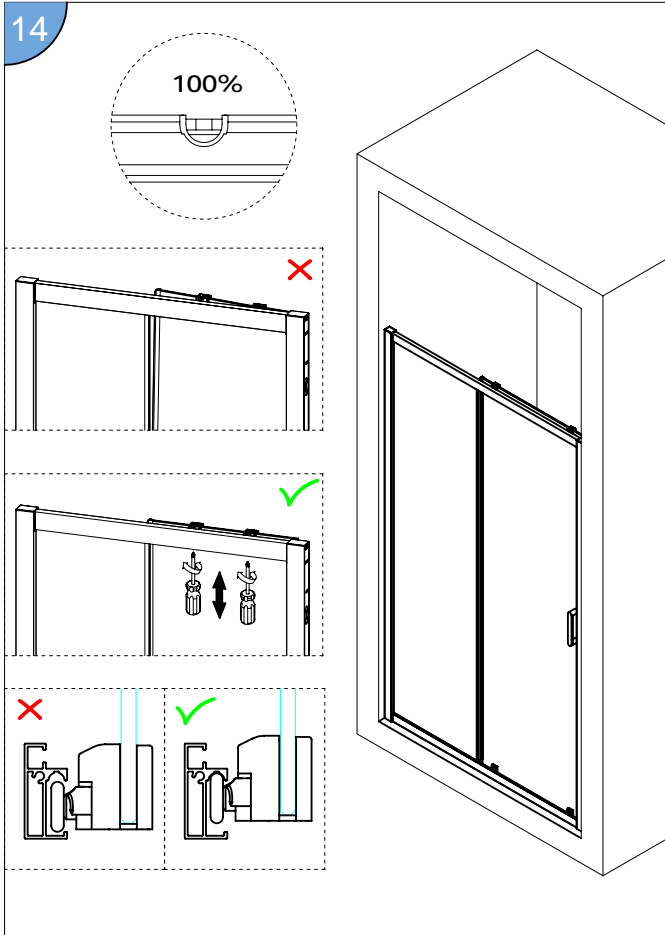




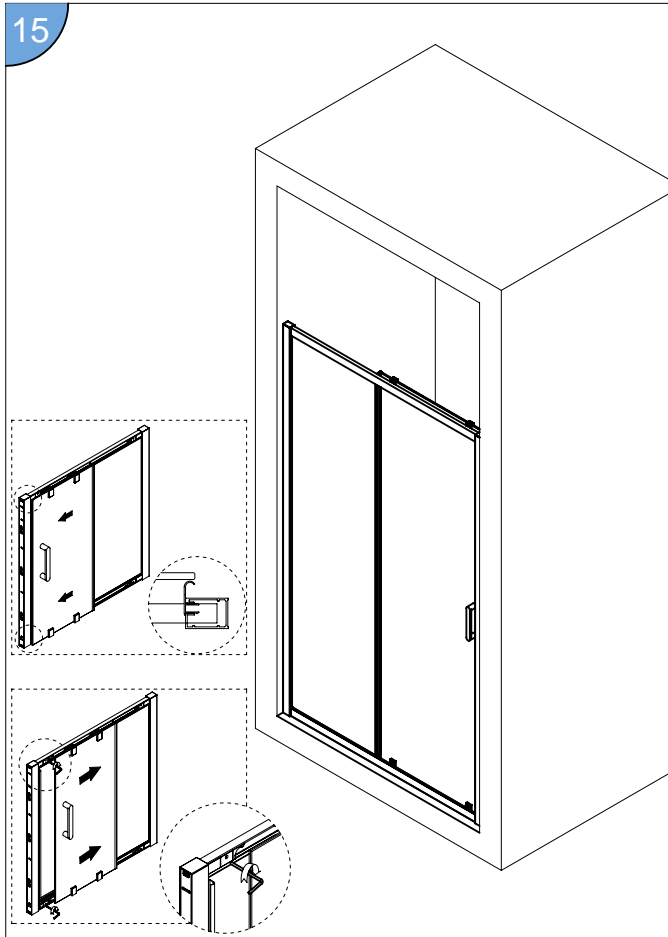
13



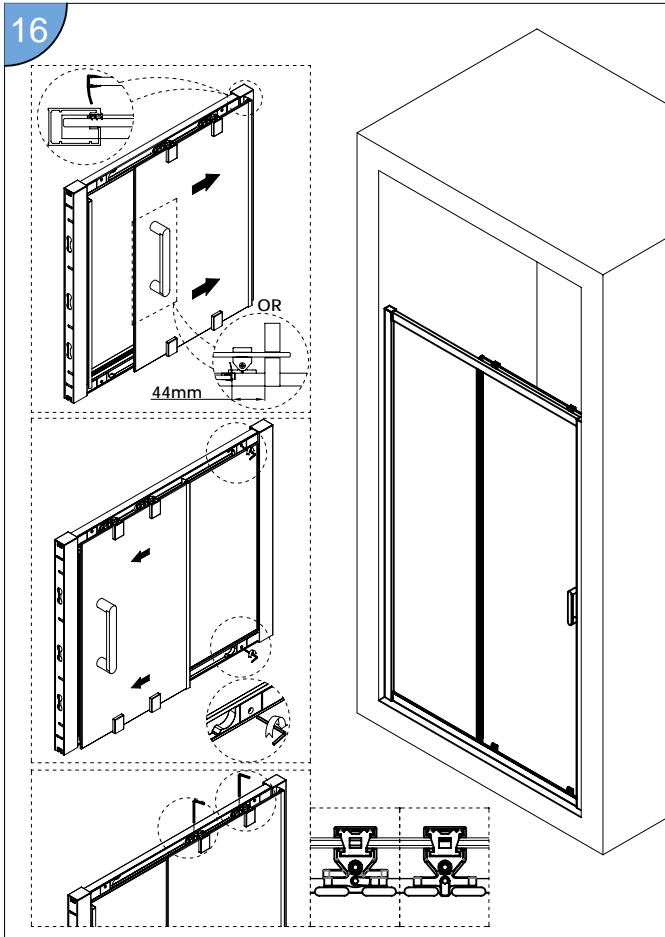
14



15

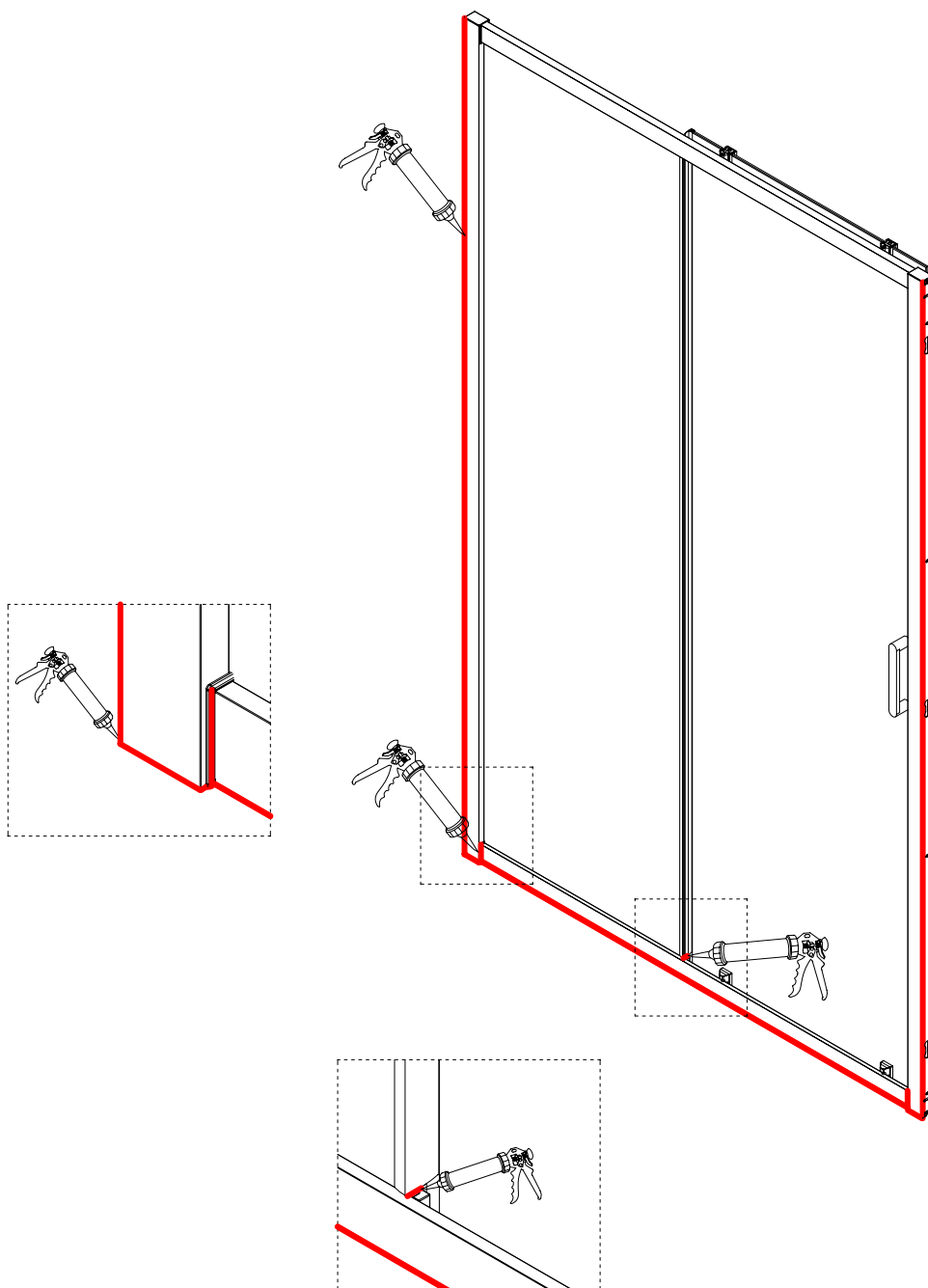
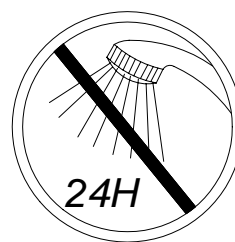


16



17

To make sure all surfaces are clean and dry before applying silicone.



**Warning:**

**DO NOT** pull off the paper when unpacking and installing, pull off after installation and adjustment is completed.

